



Established in 1953

Corporate Brochure 2023

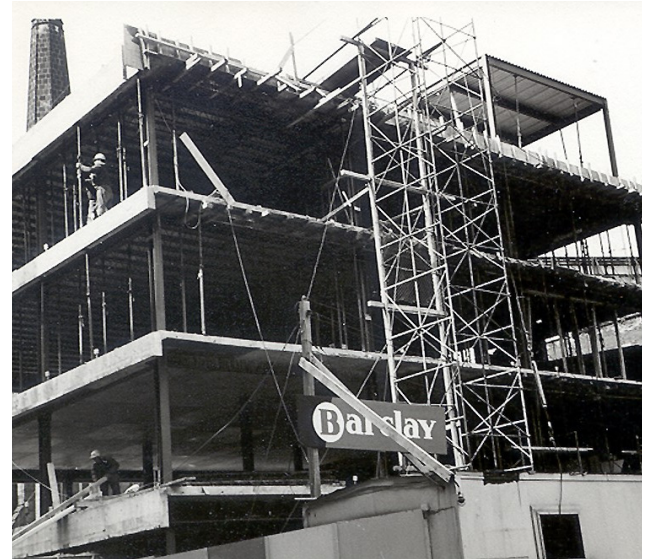
We do it once, and we do it right.

www.barclayconstructors.com

Barclay

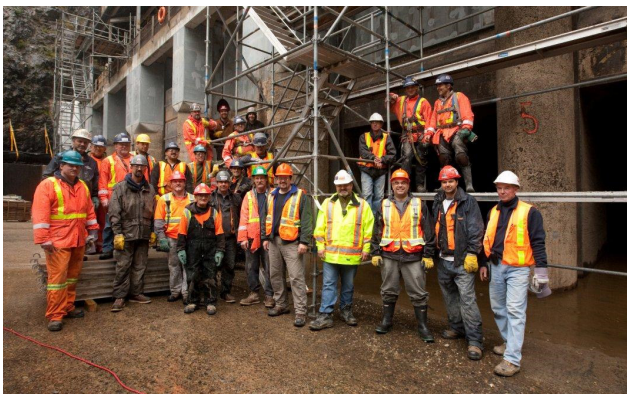
CONSTRUCTORS

Barclay, established in 1953, is headquartered in Hamilton and has a significant field staff complimented by a strong management team. Current representative assignments for Barclay are ongoing civil maintenance and access industrial scaffolding at Arcelor Mittal Dofasco and the completion of the 7,900m³ form/place/finish contract, for SNC Lavalin at the Calobogie Generating Station, west of Ottawa, Ontario.



For all your industrial building needs, you can turn to Barclay.

- Heavy Cast-In-Place Concrete Foundations for Industry
- Major Production Mill and Warehouse Storage Construction
- General Contractor Major Shutdown Re-Line and Repair Projects
- General Contractor Industrial Projects
- Shore Line Wharf Wall Construction
- Major Utility Projects
- General Contractor Co Generation Projects
- Pre-Engineered Buildings Dealer
- Industrial Design/Build Construction
- Automotive Industry Construction
- Refinery Industry and Tank Farm Projects
- Agricultural and Mining Projects
- Construction Maintenance – Major Shutdown Access Scaffold Builds
- Construction Maintenance – Misc Foundations, Site/Storm Drainage, U/G Utilities, Roads



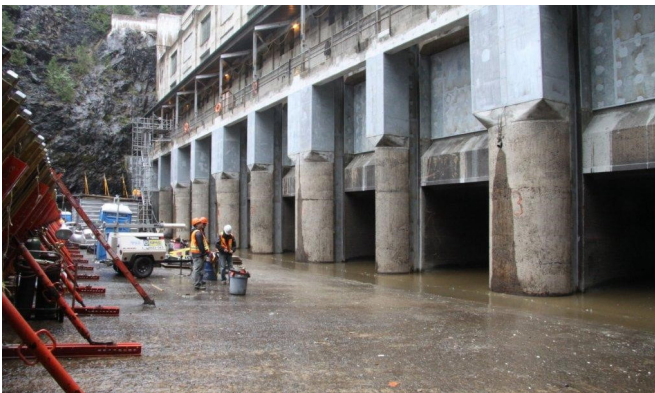
Pre-Engineered Metal Building Systems (PEMB)

Barclay has installed over 7,000,000 square feet of buildings for our clientele, majority of which assumed on a design-build basis wherein we can work closely with our Clients and Engineers to establish the ideal custom fit.



Access Industrial Scaffolding

Barclay has provided substantial scaffolding services for our clients, with experience on a wide variety of challenging industrial and commercial applications in difficult environments. Our state-of-the-art modular system allows for maximum versatility, safety, rigidity, and structural stability.



Engineer Procure Construct Manage (EPCM)

The Barclay EPCM approach takes full advantage of our expertise and resources, allowing our clients to keep control of their project, ensuring optimization through all its phases, with the budget and schedule closely monitored and our engineering project team involved from the beginning to the very end.



Heavy Industrial General Contracting

Barclay is an expert at heavy industrial construction, and we have the track record to prove it. We provide solutions for leading power generation (hydro, nuclear, fossil and natural gas), oil and gas infrastructure, mining infrastructure, and steel production infrastructure.

Major Industry Shutdown Repair/Overhaul

Barclay has helped many customers utilize antiquated facilities by designing substantial retrofits and renovations. Once the integrity of your structure is established, we use our knowledge and expertise to furnish a new look and layout, upgraded to meet code and unlock new possibilities within your facility.



Design-Build Industrial

Barclay's design-build project teams find the most practical and economical design solutions available, with a focus on safety, product quality, customer satisfaction, and competitive pricing.



Heavy Industrial Cast-In-Place Foundations

This is one of Barclay's niche markets. We are most known for surveying and layout, heavy forming, anchor/plate embedding and pumping and casting of major mill equipment foundations and building foundations. We engineer, form, reinforce and cast with our own forces, or bid competitively to specifications.



Industrial Maintenance

Barclay has installed thousands of miles of underground plant and building service lines. As long relationships are critical to Barclay, we offer very competitive and dependable maintenance service. Our crews are smart, resourceful, and motivated to solve your problems properly 'against the clock'.



Boiler/Turbo Generator Co-Generation Foundations and Superstructure

Client: ArcelorMittal Dofasco (AMD)

Location: Hamilton, Ontario

Construction of new foundations in a brownfield project for a boiler and turbo-generator. Work included excavation through slag hardened material, demolition of footings and foundations encountered during excavation, installation of piles inside a building and in an open area, installation of ducting and concrete for a duct bank underneath the final foundation, forming, and placing rebar and pouring concrete. Construction was carefully carried out in an operational steel making facility.

Pier 12 West Wharf Shorelines Restoration

Client: Hamilton Port Authority

Location: Hamilton, Ontario

This project consisted of the installation of owner-supplied steel sheet piling on outer face of an existing wall, manufacture of pre-cast concrete anchor blocks, dewatering of site, supply and install of walers, anchor rods, and anchor blocks, excavation and backfill, construction of a new 208m long concrete parapet wall, supply and install of dock furnishings, selective demolition of existing concrete relieving platform, supply and place granular fill in voids, and supply and install of new 450mm storm sewer outlet piping.



Goreway Station 880 MW Co-Generation

Client: SNC Lavalin – SNC Thermal Power

Location: Brampton, Ontario

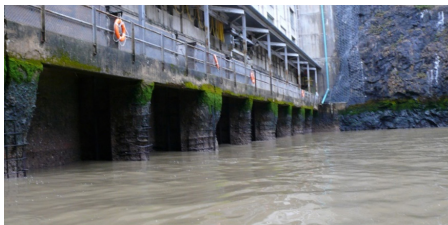
This was a greenfield power project to install reinforced concrete foundations, pedestals, pit and operations buildings. This included 18,000 m³ of cast-in-place concrete by own forces, 96,000 m³ site cut/fill/excavation and backfill, 8,000 km of underground piping, 38,000 km of underground electrical duct, all underground mechanical and electrical services not limited to natural fuel gas/sanitary and storm sewers/process mechanical/13.5 km of electrical duct banks, and electrical chambers. Barclays average crew size was 75 tradespeople with approx. 60 subtrades on site and 1000 workers (combined).

Waterdown South Water Tower Erection

Client: City of Hamilton

Location: Waterdown, Ontario

Construction of foundation structure for a 120-foot-high 2,000,000 US Gallon elevated water tower delivered in just over 14 weeks utilizing a proprietary jump form panel system. Completion of the large heavily reinforced base foundation included setting heavy stainless-steel piping sections, as well as forming and pouring vertical tower sections. To do this Barclay installed a multi-storey secured work stage scaffold at each concrete tower ring to access critical forming.



Abitibi Canyon Generating Station Tailrace Rehabilitation

Client: Ontario Power Generation

Location: Fraserdale, Ontario

Complete dam tailrace pier and deck remediation to one of OPG's marquee hydro facilities involving the construction and removal of two independent cofferdams. Unwatering of over 110 million gallons of water, scaffold access to entire tailrace, completed removal of deleterious concrete, steel plate encapsulation, and casting of new concrete. All work was successfully performed ahead of schedule and within budget.

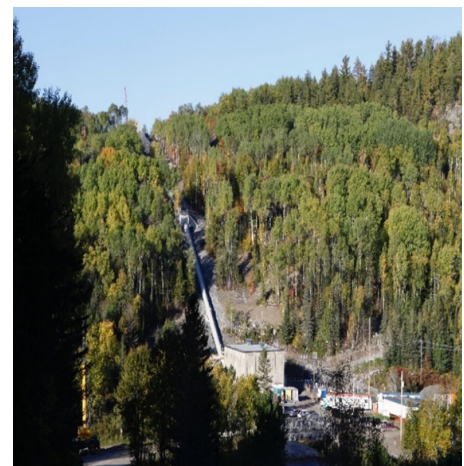


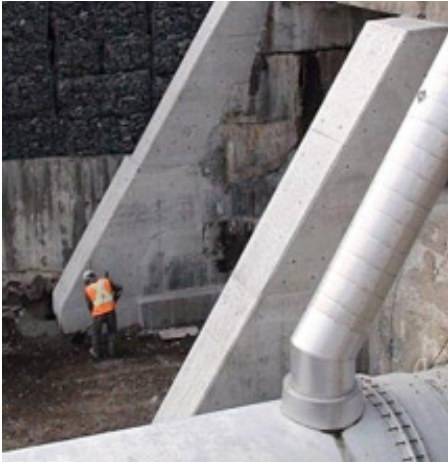
Matabitchuan Generating Station Penstock Replacement and Headworks Rehabilitation

Client: Ontario Power Generation

Location: New Liskeard, Ontario

A design-build penstock and headworks replacement project consisting of replacing the 80-year-old penstocks and upgrading of powerhouse bifurcation piping. This involved the complete demolition and rebuild of existing headworks structure and intakes consisting of two site operated gates installed in 1905, as well as incorporation of new upgrade to dam structure to meet seismic standards requiring installation of a head pond cofferdam and significant dewatering.





Chute Generating Station Dam Stabilization

Client: Ontario Power Generation

Location: Elk Lake, Ontario

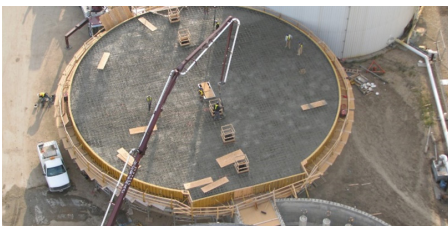
Heavy civil repairs to an existing dam structure to stabilize the existing dam structures, reduce dam leakage, including a dewatering system on the downstream face of the dam, deep drilled rock anchors, penetrating through existing concrete dam and into rock substrate below to stabilize the dam, new concrete reinforced dam abutment extensions, removal and replacement of existing wooden flashboard dam structure with temporary cofferdam system including in-water work (licensed divers).

Pier 12 Storage Tank Foundation

Client: Sylvite Agri-Services Limited

Location: Hamilton, Ontario

This project consisted of installing a new concrete containment pad foundation. Scope included saw-cut asphalt, demolition and removal, excavation for subgrade elevation plus additional perimeter for raft slab, supply/place/compact new granular sub-base, supply/install reinforcing bars, form/pour/finish concrete raft slab with rigid insulation, form/pour/finish concrete containment wall, cure and seal concrete pad, supply/install reinforcing steel, and patch/seal asphalt.



Seed Processing Facility/Tank Farm Expansion

Client: Cargill Limited

Location: Clavet, Saskatchewan

This project consisted of the construction of tank foundations, building foundations, and elevated slabs. This included new site services to accommodate new plant expansion, as well as implementation of erosion control, filtering and other geotextile components to address environmental challenges of projects. Ground improvements were required due to poor soil conditions for building footings and heavy equipment. In addition, tented enclosures and ground thawing were required for severe winter conditions. Construction was staged sequentially over 18 months to ensure minimal impact to operation of the existing facility.

We do it once, and we do it right.

Legal Name

Barclay Constructors Limited

Head Office Address

55 Morley Street
Hamilton, ON L8H 3R8
P: (905) 547-5200
F: (905) 547-5211
E: bcinfo@barclayconstructors.com

Northern Ontario Operations Office

531 Notre Dame Ave
Sudbury, Ontario P3C 5L1
P: (905) 547-5200
F: (905) 547-5211
E: bcinfo@barclayconstructors.com

Years in Business

Barclay Constructors Limited has been operating across Canada since 1953.

Executive Leadership

Allen Nagel, Vice President, Operations
(437) 329-2426 / anagel@barclayconstructors.com

Brad Young, Manager, Business Development
(905) 730-3844 / byoung@barclayconstructors.com

Michel Cardinal, Construction Manager
(705)-670-5195 / mcardinal@barclayconstructors.com



Geographic Presence

Safety is not a Statistic; it's People

Nothing is more important to Barclay than the Safety and well-being of our people and the people that they work alongside.



Company Affiliations



Select Clients



For more information visit our website:
www.barclayconstructors.com

